

A Sense of Place



Artwork by Alice White



Project Space

183-185 Bermondsey Street
London SE1 3UW
+44 (0) 203 411 5152

[instagram@bprojectspace](https://www.instagram.com/bprojectspace)
[facebook@projectspace](https://www.facebook.com/projectspace)
[twitter@projectspace](https://twitter.com/projectspace)
www.project-space.london

A Sense of Place

Society of Graphic Fine Art

This is the second of three thematically linked exhibitions Curated by Philippa Beale, responding to the concept of a 'Sense of Place'. The SGFA Members' exhibition encompasses a diverse range of responses to the central idea.

Founded in 1919, the Society of Graphic Fine Art exists to promote and exhibit original works of art. The emphasis is on excellence in drawings, created by hand. This includes all colours and media: pencil, pen, brush, painting, charcoal, conté, and original printmaking.

The SGFA is the only UK society dedicated exclusively to drawing, and welcomes a growing international membership. The annual SGFA 'Open' exhibition has taken place at the Mall Galleries in London since 2021. There are several Members Only exhibitions in London, the regions (Watts Contemporary Gallery in Guildford, The Royal Birmingham Society of Artists) and online.

The SGFA encourages Members to take an active part in regional events, social media, videos, drawing days, and the running of the Society itself.

The Theme

A 'Sense of Place' is used to describe how someone perceives and experiences a place or environment. The term can be used and understood in many ways. It is a multidimensional, complex construct used to characterize the relationship between people and spatial settings. Some geographical places are of special interest to individuals, while to others a 'Sense of Place' is a feeling or perception held by groups of people -not by a specific location. It is often used to characterise certain elements which make a place special or unique, or which foster authentic human attachment and belonging.

Geographers, anthropologists, sociologists and urban planners study why certain places hold special meaning to particular people. Regions said to have a strong 'Sense of Place' have an



identity which is deeply felt by inhabitants and visitors.

The term is used in urban and rural studies in relation to place-making and the attachment of communities to their environment or homeland. Anthropologists Steven Feld and Keith Basso define a 'Sense of Place' as:

'The experiential and expressive ways places are known, imagined, yearned for, held, remembered, voiced, lived, contested and struggled over. Many indigenous cultures are losing their sense of place because of climate change and loss of ancestral homeland, land rights and destruction of sacred places.'

A 'Sense of Place' is a social phenomenon. Codes aimed at protecting, preserving, and enhancing places felt to be of value include World Heritage Site designations, the British Area of Outstanding Natural Beauty controls, and the American National Historic Landmark designation. A 'Sense of Place' can be our back garden, a place where we grew up, had a good time, or lived in fear: it may even be a place which is completely imaginary.

Philippa Beale

https://en.wikipedia.org/wiki/Philippa_Beale

Was a Director of Studies at Central Saint Martins College of Art and Design
Ph.D Supervisor for Smartlab at University of the Arts London and City
University. External Examiner for MA Fine Art and Nature at the Margate School
Vaux, October 2022

Abstract from Wikipedia

Michele Ashby

These four pastels form part of my 'Little moments big memories' series which delve deep into old sewing boxes hoping to stir treasured memories and emotions from happy times spent being taught the rudiments of the ancient craft of sewing.

|

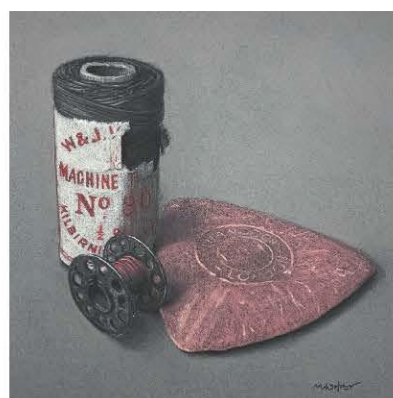
'Wind the bobbin up'

Pastel
30 x 30 cm
£650



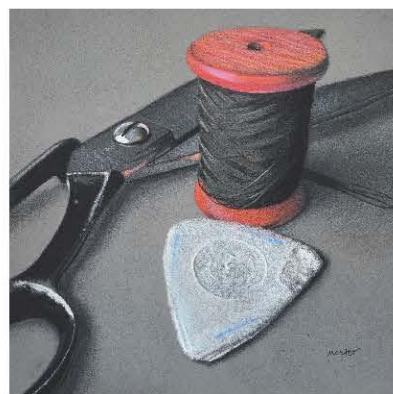
'No.30 Pink'

Pastel
30 x 30 cm
£650



'Orange reel'

Pastel
30 x 30 cm
£650



'Measure twice cut once'

Pastel
30 x 30 cm
£650



Deborah Batt

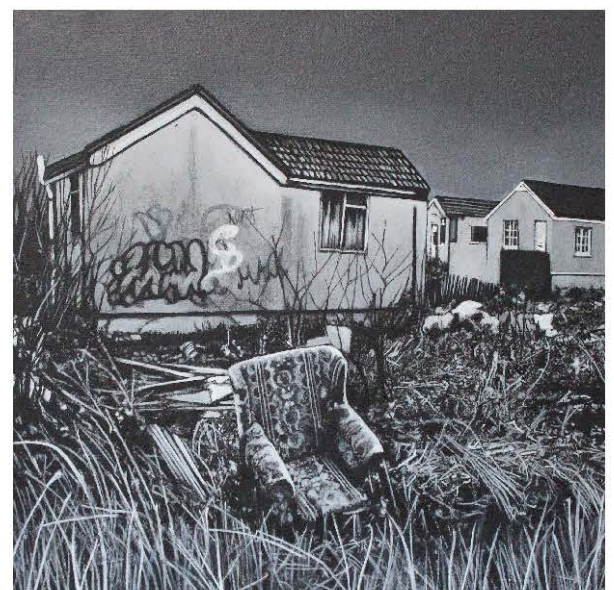
It's our relationship to our surroundings, both the urban and rural landscape, but it can alter, evolve through environmental and social changes. Sometimes having a negative impact, creating environmental degradation and disturbance.



Untitled
Acrylic and pen on canvas
35 x 45 x 5 cm
£1800

The Problem with sofas
Acrylic and pen on canvas
35 x 45 x 5 cm
£1800

Gran's chair
Acrylic and pen on canvas
33 x 33 x 5 cm
£1500

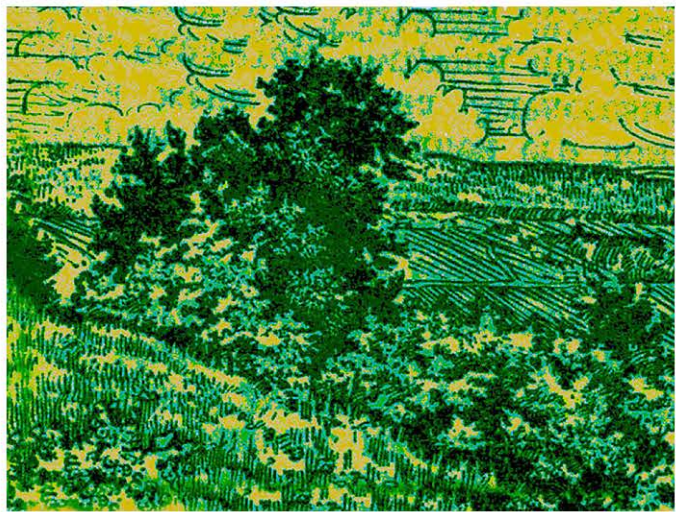


Philippa Beale

https://en.wikipedia.org/wiki/Philippa_Beale

And there's another country
I've heard of long ago
Most dear to them that love her
Most great to them that know
We may (we may not count her armies)
We may (we may not see her King)
Her fortress is a faithful heart
Her pride is suffering
And soul by soul and silently
Her shining bounds increase
And her ways are ways of gentleness
And all her paths are peace

The Hogs Back Hampshire
Silkscreen artist's proof
56 x 67 cm framed
£320



The Hog's Back, Hampshire
Oil on canvas
48 x 60 cm Framed
£480



Sally Beaumont

www.sallybeaumontartist.com

[Instagram@boothbyintaglio](https://www.instagram.com/boothbyintaglio)

As a printmaker I work in a variety of techniques and varying subject matter. It is no surprise, then, that I have three very different responses to the theme, Sense of Place. Being a painter/ printmaker I am influenced by images of the horse and self sacrifice.

Trained in printmaking at Hornsey College of Art under Michael Rothenstein and Bartholomew dos Santos at the Slade School. I exhibit and teach mainly in Lancashire, Lincolnshire and London. I am the holder of the Society of Graphic Fine Artists Associate Award 2021.



Decius Mus on the battlefield- after Rubén's 2018

Etching on marbled canvas.

32 24 cm Framed 50 x 36 cm

Unique print.

£350.00

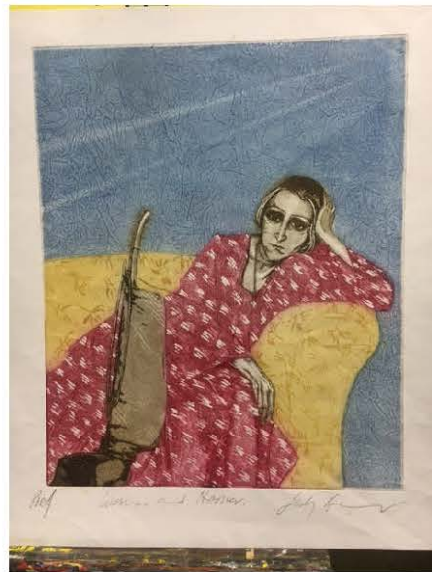
Woman and Hoover - A woman's place in the home.

2018

Coloured etching and aquatint

32 24 cm Framed 50 x 36 cm

£350.00



Waddesdon Manor- A visit to a place, 2018

Etching on silk

32 24 cm Framed 50 x 36 cm

£350.00



Harriet Brigdale

Vice President of the Society

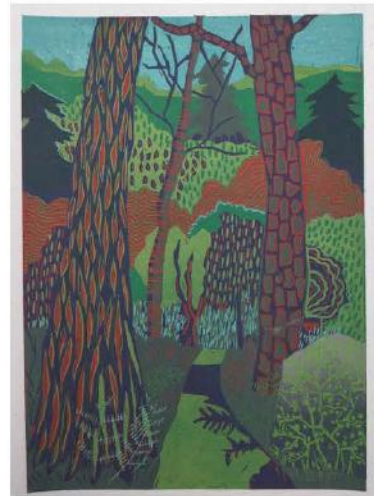
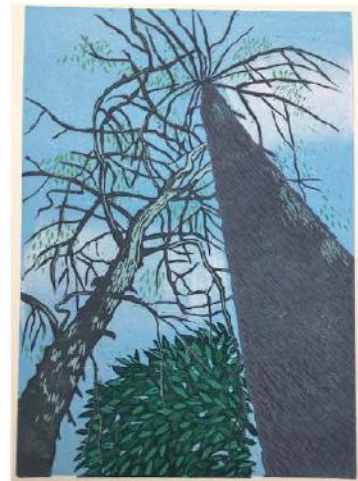
I walk in Wakehurst Place nearly everyday, I love the tallest trees, the bracken and all the small details around me. I grew up surrounded by trees, when you are very small all trees are very tall, I always felt that they were protection me, surrounding me with age old wisdom. And I really still feel like that, so walking and drawing and painting trees is a great joy and passion to me, and so links my past with my life here and now, a real sense of space.

Leaf Stories
Lino prints
38 x 27 cm

Dazzling Height
Lino print
38 x 27 cm

Wakehurst Woods
Lino print
38 x 27 cm

Eucalyptus Leaves
Lino print
38 x 27 cm



Anne Carpenter

annecarpenterfabriccollages.co.uk

Instagram: [ac_fabriccollage](https://www.instagram.com/ac_fabriccollage)

Anne is influenced by 18th Century silhouettists who just cut. She is inspired by the textures and colours of Fabrics And makes them work to her advantage That is painting with fabrics and drawing with scissors .

Grapes 2021
Sepia
Collage print
£800

Aloe 2019
Collage print
£800



Lynda Clark Hon Secretary

Website <https://lyndabirdclark.co.uk/>

The Gathering

Visualising collections of three dimensional, inanimate objects on a two dimensional plane.

Trying to capture the substance, form and quality in drawing and watercolour. In this process, unlike a photograph, they and the memories of their gathering, in time and place, are firmly imprinted for the future.



Autumn Chestnuts
Watercolour
46 x 56 cm
£850

Littlehampton Beach
Watercolour
46 x 56 cm
£850



Connections
Watercolour
46 x 56 cm
£850



Lucy Clayton

<https://www.lucyclaytonart.co.uk/journal/2022/8/12/seaweed-with-pebbles>

<https://www.instagram.com/lucyclaytonart/>

<https://twitter.com/LucyclaytonLucy>

Inspired by coastal walks along the strand line, I wanted to explore the sense of being surrounded by the curved overlapping pebbles, contrasting with the elegant twists and negative space created by the dried seaweed.

Seaweed with Pebbles 2022
Watercolour & Ink
64 x 55 cm framed
£1500



Gary Cook

cookthepainter.com

www.instagram.com/cookthepainter

Incredibly there are 8.4 million trees in London. That's roughly one oxygen-giving structure per person in the capital. And yet, in these rooftop views I found it hard to spot more than a handful of trees.



Shardo

Ink, watercolour and charcoal

£1195

8.4m to 1

Ink, watercolour and charcoal

£695

Jürgen's view?

Ink, watercolour and charcoal

£695



Louisa Crispin

www.louisacrispinart.co.uk
[instagram@louisacrispin](https://www.instagram.com/louisacrispin)
[facebook@LouisaCrispinArt](https://www.facebook.com/LouisaCrispinArt)
[twitter@Louisa_Crispin](https://twitter.com/Louisa_Crispin)

Lost in a world of intricate observations from nature, Louisa is entranced by the cycle of growth and decay. It's quiet in her studio as she looks ever closer at the flora and fauna. Texture, shadows, silhouettes and movement created with graphite marks and tone, it's rarely about the colour.



Study of a Butterfly 002 ~ Comma (2020)
Graphite
39 x 35 cm
£550



Study of a Butterfly 003 ~ Peacock (2020)
Graphite
39 x 35 cm
£550

Study of a Butterfly 004 ~ Red Admiral (2020)
Graphite
39 x 35 cm
£550



Margaret Eggleton

www.margareteggleton.co.uk

Facebook: Margaret Eggleton

Instagram: Eggleton.art

LIGHT OVER LONDON

I am especially interested in the shapes of buildings when seen from above and the effects of natural light. The fixed shapes of the built environment contrast with those of trees and the river reflecting the sky, boats and buildings. London will never cease to inspire me!

Morning Light

Watercolour

size 55 x 45cm

£750

Light from the Shard

Watercolour

size 55 x 45cm

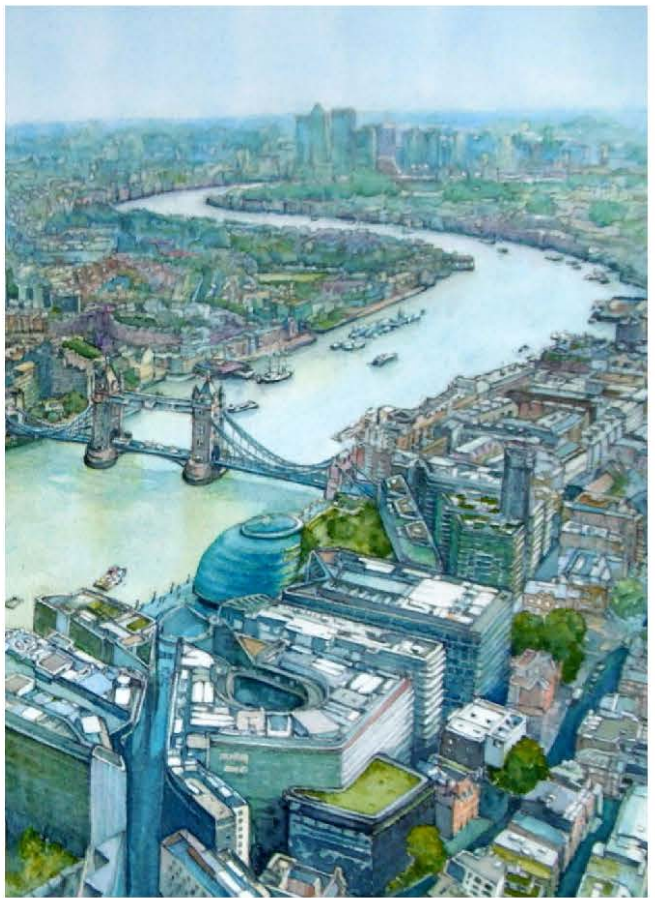
£750

Evening Light

Watercolour

size 55 x 45cm

£750



Felicity Flutter

Email: flicflutter@gmail.com

Website: www.felicity-flutter.co.uk

Facebook: [FelicityFlutterArt](https://www.facebook.com/FelicityFlutterArt)

Twitter: [@FlicFlutter](https://twitter.com/FlicFlutter)

Instagram: [@flicflutter](https://www.instagram.com/flicflutter)

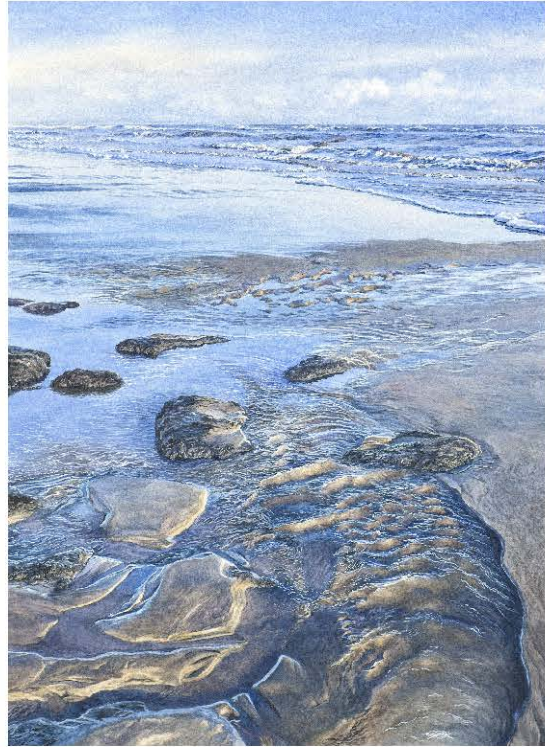
In winter the low angle of the sun creates wonderful light, shadows and colours. Fascinating rivulets in the sand are created by the rapid flow of mini streams, unique to each low tide. These scenes evoke a sense of place in this particular part of the south coast, Winchelsea Beach.

FLOW

Watercolour and Graphite Pencil

Image size - H32 x W23 cms (Framed – H49 x W39 cms)

£1,250

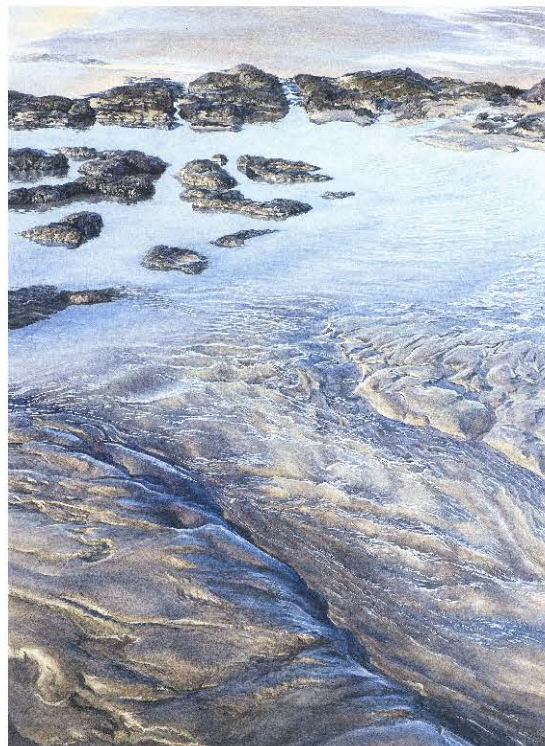


FLUX

Watercolour and Graphite Pencil

Image size - H32 x W23 cms (Framed – H49 x W39 cms)

£1,250



Marc Gooderham

[Twitter@MGooderham](https://twitter.com/MGooderham)

[Instagram@marcgooderhamartist](https://www.instagram.com/marcgooderhamartist)

www.marcgooderham.co.uk

Born in 1977 in West London, Marc Gooderham documents the unique architecture of the city. Where we may pass by without a second glance, Marc finds an attractive melancholy in the buildings he draws and paints. Contemplating lives once lived here and those that continue to do so.



Festival Pier - 2022
Charcoal on paper
20 x 29 cm 30 x 40 framed
£350

Harbourside, Lynmouth - 2021
Charcoal on paper
29 x 20 cm 30 x 40 framed.
£350

Interior With Flowers - 2022
Charcoal on paper
20 x 29 cm 30 x 40 framed.
£350

...



Russel Herron

www.russellherron.com

[instagram:@russell_herron_art](https://www.instagram.com/russell_herron_art)

[twitter:@russellherron](https://twitter.com/russellherron)

Gender has become fluid and unfixed, so this drawing is both man and woman, coming together, falling apart; made up of disparate elements which attempt to form a putative whole.

Head of a man/woman
Pencil on paper
94 x 69.2cm
£2000



Kaye Hodges

www.kayehodgesportraits.com

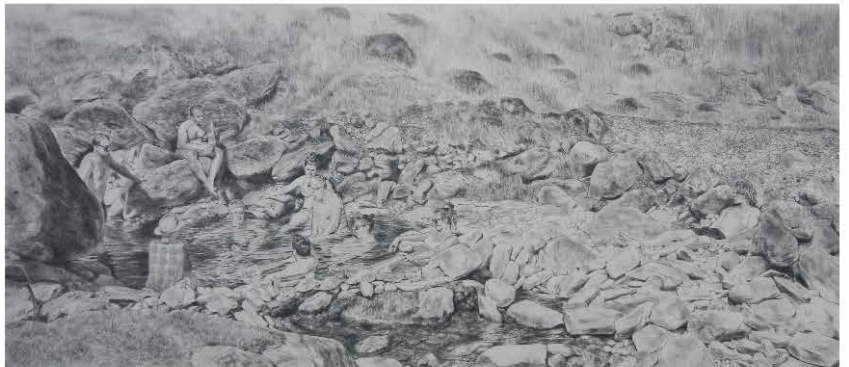
[Instagram:kayehodgesportraits](https://www.instagram.com/kayehodgesportraits)

Within these two drawings I wanted to portray the relationship between people and their surroundings. A sense of place but also a sense of achievement. A sense of being part of the group, sharing the experiences. These moments unite us and make us the sociable beings we are.

Snowdonia - A place of achievement.
Graphite and Charcoal.
70 x 30 cm
Price £1000



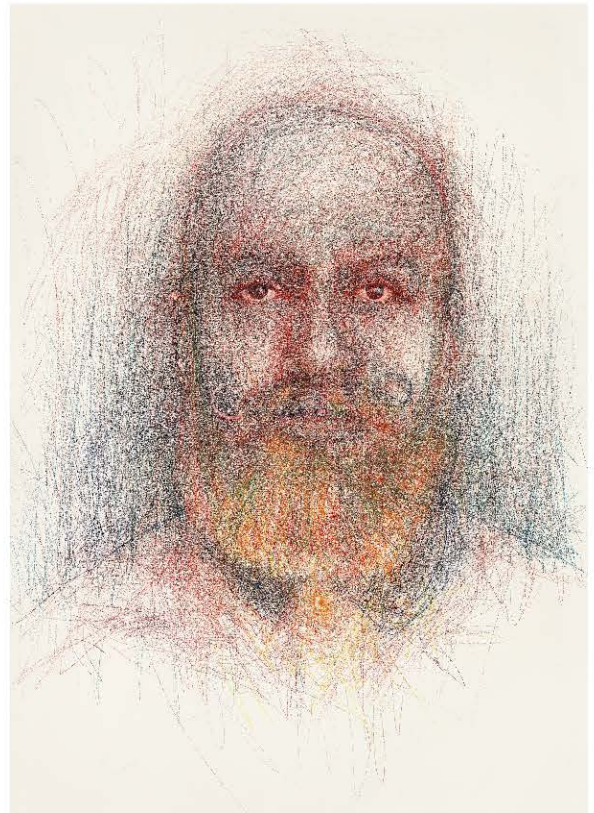
The Lakes - A place of friends gathering.
Graphite
70 x 30 cm
£1000



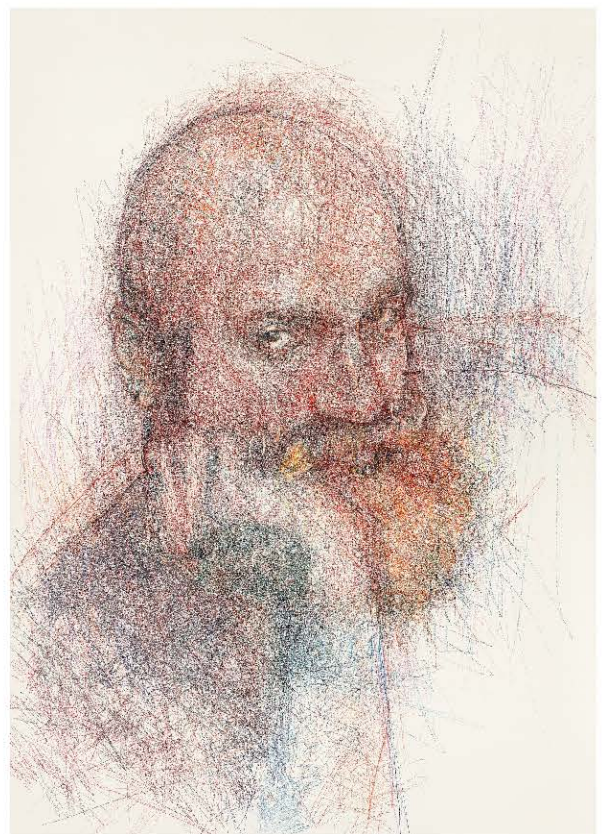
Curtis Holder

www.curtisholder.co.uk
[Instagram@curtisartist](https://www.instagram.com/curtisartist)

Portraits of Erhan and his beard. Drawing inspiration from intimate conversations with the people he draws, Curtis Holder's multilayered coloured pencil portraits are dynamically tender, revealing something of the inner life of his sitters. His drawings emerge in complex strokes, capturing a sense of his subjects' form, movement and emotional intent. the people he draws. These studies of Erhan were created during an exchange of shared experiences between two children of immigrants to the UK; a conversation that revealed a mutual struggle to find a personal sense of place and belonging.



Hirsute I/2022
Coloured pencil on paper
£1,600



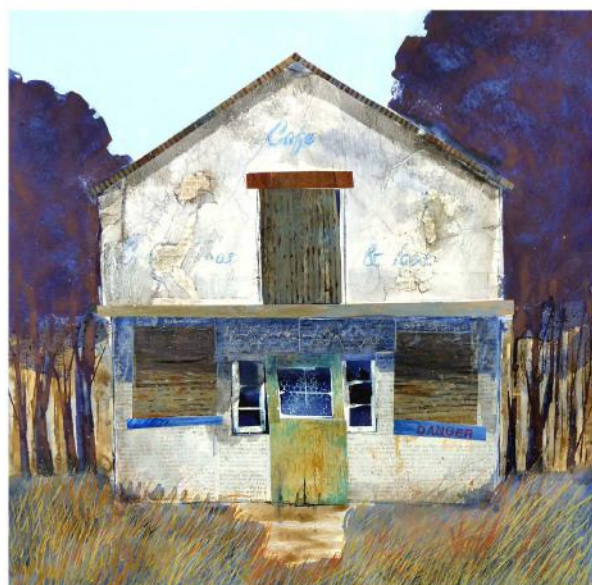
Hirsute II/2022
Coloured pencil on paper
£1,600

Christine Hopkins

Christine Hopkins paints and prints in mixed media, inspired by the built environment, focusing on wear and tear, and decay. These paintings are born out of a fierce love of Cornwall's hinterland, away from the coast and holidaymakers. Collage material includes printed Cornish language, dialect and handmade printed papers.



Blue Garage Door 2022
Mixed media
41cm x 41 cm x 2cm
£350



Cream Teas and Ices 2022
Mixed media
41cm x 41cm x 2cm
£350

Green Door, Number 5 2022
Mixed media
41cm x 41cm x 2cm
£350



Maz Jackson

My sense of place is in my head as it is a depository of images and memories. These thoughts translate into artworks whose content also relies on a myriad of sketches depicting my surroundings, experiences and imaginings.

This way 2021
Tempera on gessoed limewood
10 x 14 cm Framed 37 x 41cm
£650

The Messenger 2022
Egg tempera on gessoed oak
14 x 19cm Framed 37 x 41cm
£1450

In the orange grove the Horse Men
wish to kiss the purple moon 2022
Egg tempera on gessoed oak
14 x 19 cm Framed 37 x 41cm
£1450



Charlie Kirkham

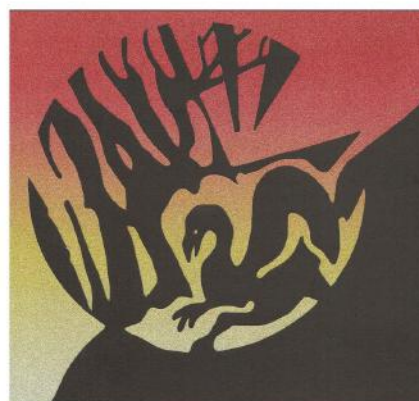
They are part of a larger series exploring George and the Dragon. In my re-working of the folktale, the characters inhabit a world that is both familiar; a garden, a woodland and fantastical, an impossible place with mystical beings.

Dragon Head
Papercut
15 x 15cm
£125

Margaret Emerging From A Dragon
Medium: Papercut
15 x 15cm
£125

Sunset Dragon
papercut
15 x 15cm
£125

The Final Fight
Papercut
15 x 15cm
Price: £125



Pamela Lloyd-Jones

'In any picture I create, 'places' are where life happens. So, whether the picture is a landscape, an interior, or an urban scene, I always want the viewer to feel engaged in that place, and the human life involved.'



'Man in a Suit'

Ink and acrylic on natural canvas.

34 x 44 cm

£450

'Beach Street'

Ink and acrylic on natural canvas.

34 x 74 cm

£600

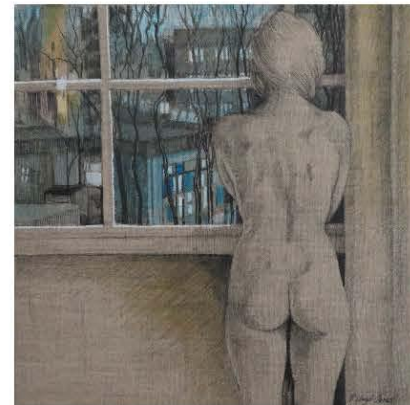


'Window No.7'

Ink and acrylic on natural canvas.

34 x 34 cm

£400



'Cafe'

Ink and acrylic on natural canvas.

74 x 74 cm

£725



Vincent Matthews

I have often been drawn to these places that my pictures depict, in the area around Rye, where I am based. When out sketching, the old buildings and the landscape in this region inspire me and give me a sense of place - a feeling of belonging, calmness and reassurance.



The Lighthouse
Indian ink drawing
43.5 x 53.7 cm
£475



The Watch House
Indian Ink drawing
49 x 44cm
£475

The Thin House
Indian ink drawing = £475
425 x 54.7cm
£475



Elizabeth Nast

twitter.com/liznast

www.elizabethnast.co.uk

[instagram.com/elizabethnast](https://www.instagram.com/elizabethnast)

Psychogeography of the city, we as humans inhabit is complex, every space is filled with history, atmosphere, and emotions. These seemingly ordinary scenes, a church, a council house, and an all too familiar street scene, are depicted in a polaroid format, found in old photo albums, and enlarged to emphasize the images importance to me.



Dad's 2x great-grandad John Spreadborough and my mums 2x Great grandad Henry Farrant Castle worshiped together and christened their children in this church in 1800s

St Alfeges, 2022

Acrylic on Canvas Board

PRICE: £495

11 Galahad Road, Grove Park, 2022

Acrylic on Canvas Board

PRICE: £425

Homeless, 2022

Acrylic on Canvas Board

PRICE: £475



Mums family lived in Grove Park since 1930s Mum grew up in this house, so did I for a while



A sense of place is a precious thing homeless people are often over looked and history repeats itself.

Katherine Peeke

www.kpeeke.com

My reaction to the theme 'My Sense of Place' resulted in this series of three 'Release' paintings. Coming from a place of restraint to a sense of freedom following a divorce. I work with light-fast museum quality acrylics and an airbrush. The concept of airbrushing is misunderstood, but when utilised within fine art it has all the creativity of traditional techniques. Requiring accurate drawing skills as well as painting abilities to combine into producing the paradox of illusion.

'Self Release' 1 -2019
Lightfast museum quality acrylics
50 x 43 cm
£650

'Self Release' 2 -2019
Lightfast museum quality acrylics
50 x 43 cm
£650

'Self Release' 3 -2019
Lightfast museum quality acrylics
50 x 43 cm
£650



Sumi Perera

<https://www.saatchiart.com/sumiperera>

<https://www.thelondongroup.com/sumi-perera/>

https://www.instagram.com/sumi_perera/

<https://centralbookingnyc.com/artists/sumi-perera/>

<https://www.axlearts.com/printmakers/sumi-perera-re>

http://www.loopartists.org.uk/?page_id=78

<https://twitter.com/PereraSumi>

<https://www.facebook.com/sumi.perera.71>

<http://prismprintinternational.com>

A hybrid assemblage: watercolour made with water harvested from the icebergs from Greenland (Olafur Eliason's ICE WATCH), turmeric, ash, salt & charcoal; combined with a screenprint made with charcoal powder, with burnt, charred holes.

This work addresses issues of climate change, the need for drastic changes before they become irreversible.



The Regeneratrix – The Phoenix 2022

Watercolour, charcoal, hybrid print & burning

Price : £795 framed £ 695 unframed variable edition of 30.

Susan Short

www.susan-short.co.uk
[Instagram @susanshortart](https://www.instagram.com/susanshortart/)

These 'Sense of Place' paintings are inspired by Bermondsey, a lively place with great character and history. The arrival of Galleries such as White Cube have attracted many visitors, new cafés and shops. My work is made in response to my environment, featuring landscapes, cityscapes and architecture.



Susan Short
Orange Umbrella, Bermondsey Street
Oil on Canvas
53 x 63 cm
£1,500.00

Susan Short
Café Society 2022
Oil on Canvas
53 x 63 cm
£1,500.00



Jonathan Stockley

www.jonathanstockleyart.com

www.instagram.com/jonathanstockleyart

www.jonathanstockleyart.com

A self-taught artist, Jonathan produces small detailed studies of rural, urban and industrial landscapes. Portraying abandoned and derelict buildings as atmospheric monochrome studies together with landscapes that are as familiar as they are bleak. Each one richly textured through intricate mark-making that rewards the observer with closer inspection.

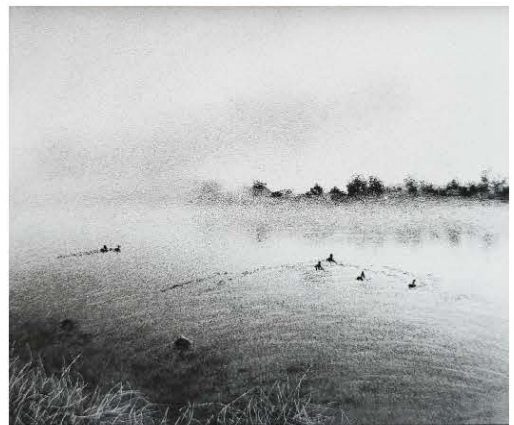


'Dykebar Hospital'
Charcoal
£225



'September Mist II'
Charcoal
£225

'September Mist'
Charcoal
£225



'Three Trees in a Snowfield'
Charcoal
£225



Michael Walsh

Intimations of the past and the future in 'Revisiting', a 19th C figure walking in the shadows of Bloomsbury Gardens and in 'Times and a Place' at Rochester in Kent, it's Roman past, part of the existing medieval castle walls and the M2 bridges in the distance.

'Revisiting'
Pastel/wet pastel ground
48 x 68 cm
£1250.00



'Times and a Place'
Pastel/wet pastel ground
48 x 68 cm
£1250.00



Tianyin Wang

<https://www.tianyinwangart.com/>

I present my original art in black and white - with all the shades of grey in between. Keeping it pure and simple is my way of life. My original drawing style captures the unique character of my subjects. Inspired by nature, I specialise in charcoal drawing with animals and birds as my preferred subjects depicting the details and movements that make up their spirit.

Light, dark, loose, tight, still, in motion - these are the key elements I incorporate in my artwork. Drawing is the honesty of art. There is no possibility of cheating. It is either good or bad. That's why I am addicted. Play with the contrast, shapes and tones is such a joy.



The Owl II 2022
Charcoal on paper.
46 X 62 cm Framed.
£ 550

Lucky II 2022
Charcoal on paper
46 X 62 cm Framed.
£630

Relaxation 2022
Charcoal on paper.
46 X 62 cm Framed
£640



Kevin Wells a.k.a Squiggleking

Blog: <https://wellsart.blogspot.com>

Instagram: <https://instagram.com/squiggleking>

Twitter: <https://twitter.com/kevinwellsart>

I tried to make beautiful portraits but got carried away. The drawings are all singers linked to time and place.



Ray Charles 2022.
Pencil and ink on toned paper.
35 x 43 cm framed
Not for sale.

Nina Simone 2022.
Coloured pencil, ink and coffee on paper.
35 x 43 cm framed
Not for sale.



Mick Jagger 2022.
Coloured pencil and ink on toned paper.
35 x 43 cm framed
Not for sale.



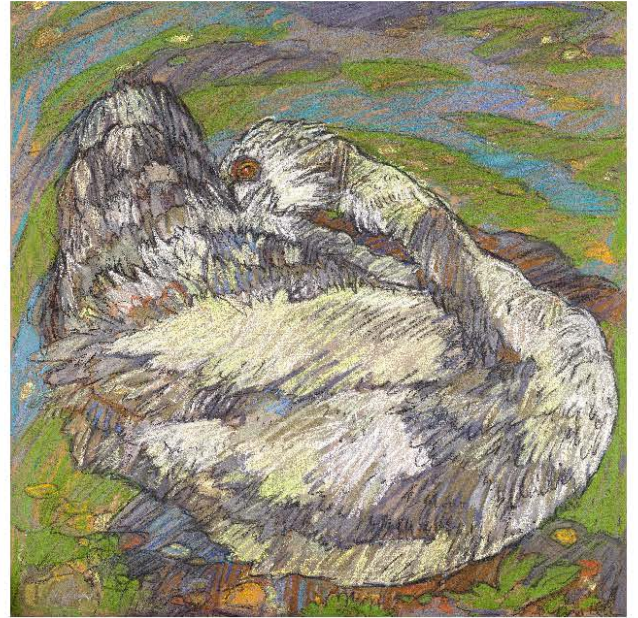
Alice White

www.alicewhiteart.com

[Twitter@alicewhiteart](https://twitter.com/alicewhiteart)

[Instagram@alicewhiteartist](https://www.instagram.com/alicewhiteartist)

Alice is a tutor University of the Arts London and a Lecturer for The Art Society. Employing an expressive painterly language, Alice explores how wildlife in inner-city habitats impacts positively on personal and social spaces. Her recent projects include: 'The Art of Science', Scott Polar Research Institute (Cambridge Museums, 2022). 'Our Place in Space', SunSpaceArt (Cambridge University, 2022)



Unfurling Beauty. 2022.
Oil Pastel and Charcoal on Wooden Board
£650

Savage Beauty 2019
Acrylic on canvas
90 x 90 cm
£1200



Angela Williams

For several years I have been regularly visiting the gardens of Titsey Place in Limpsfield, Surrey. It opens from early summer to early autumn and has a wonderful and magical walled garden full of ever-changing shapes, patterns, colours and textures. It is an inspirational subject with never ending possibilities.

Walled Garden May
Acrylic
66 x 66 cm Framed
£495



Walled Garden June
Acrylic
66 x 66 cm Framed
£495



Les Williams

President of the Society



Life for me has always been London, Bermondsey was where my father was born, mother was told he was a rough boy from a rough area. Me, I worked within walking distance, away across London Bridge, but now I'm back. It is not difficult to tell where I feel at home.

Blackfriars London skyline 2022
Pen and wash.
84 cm w x 17cm h
£395



The Cenotaph 2022
Pen and wash
40 w x 30 cm
£250

Tha Bank
Pen and wash
40 x 30 cm
£250



A Sense of Place



From top to bottom Angela Williams Jonanthan
Stockley Pamela Lloyd-Jones Lynda Clark



Artwork by Harriet Brigdale, Louisa Crispin and Katherine Peeke

A Sense of Place

29 November- 10 December 2022

10am-6pm Tuesday to Saturday

Bermondsey Project Space

A cutting edge creative platform for visual art.

183-185 Bermondsey Street London SE1 3EU

Tel: [02034415152](tel:02034415152) Email: abps@project-space.london

This second of three exhibitions at the **Bermondsey Project Place** is created around our view or a sense of attachment to a place. This second, much larger exhibition, created by the **Society of Graphic Fine Art**, is much more diverse in relation to the idea of 'place' and also, in the range of art produced, coming as it does from one of the oldest British societies for artists in the country.

Founded in 1919, the Society of Graphic Fine Art exists to promote and exhibit original works of high quality, with the emphasis on excellence in drawing and draughtsmanship. This includes all traditional media and any of the forms of original printmaking.

The term '**A Sense of Place**' has been used in many different ways. It is a multidimensional, complex construct used to characterise the relationship between people and spatial settings. It is a characteristic that some geographic places have it for some of us, while to others it is a feeling or perception held and not actually the place itself. It is often used in relation to those characteristics that make a place special or unique, as well as to those that foster a sense of authentic human attachment and belonging.



Christine Hopkins



Lynda Clark



Artwork by Deborah Batt

Published by Plato-Beale Productions 2022